



OPERATOR'S MANUAL

EH SERIES

Gas Engine / Diesel Fired

READ THIS MANUAL

This manual contains important information for the use and safe operation of your RAMTEQ® machine. **FAILURE TO READ THIS MANUAL AND FOLLOW ITS INSTRUCTIONS PRIOR TO OPERATING OR ATTEMPTING ANY SERVICE OR MAINTENANCE PROCEDURE COULD RESULT IN SERIOUS INJURY OR DEATH TO YOU OR OTHER PERSONS; ALSO DAMAGE TO THE MACHINE OR TO OTHER PROPERTY.**



Table of Contents

SECTION 1 OPERATOR'S MANUAL

■ UNPACKING.....	2
■ SAFETY INSTRUCTIONS AND WARNINGS.....	3
■ MAINTENANCE INSTRUCTIONS.....	4, 5
■ OPERATING INSTRUCTIONS.....	6

SECTION 2 PARTS AND SERVICE MANUAL

■ EXPLODED VIEW.....	7
■ PARTS LIST.....	8
■ BURNER ASSEMBLY (12V).....	9
■ BURNER ASSEMBLY (115V).....	10
■ CONTROL BOX ASSEMBLIES.....	11
■ ENGINES & MUFFLERS AND HOSE, WAND, & GUN.....	12
■ BELT DRIVEN PUMPS.....	13
■ WIRING DIAGRAMS.....	14, 15
■ PLUMBING DIAGRAMS.....	16 - 19
■ TROUBLESHOOTING.....	20
■ WARRANTY.....	21

Unpacking Instructions

INSPECTION

Carefully unpack your new RAMTEQ equipment by removing the shrink wrap & banding from pallet. Remove the pressure washer from the pallet and check for any physical damages that may have occurred during shipment. Check for all parts specified and shown in figure 1.



INCLUDED PARTS

- Pallet
- Packing Material
- Outer Box
- EH Series Machine
- Operator's Manual
- Wand / Trigger Gun
- Nozzles 15°
- Hose 3/8" X 50'

NOTICE

Information in this operator's manual is subject to change without notice.

RAMTEQ SHALL NOT BE LIABLE FOR TECHNICAL OR EDITORIAL ERRORS OR OMISSIONS CONTAINED HEREIN. This operator's manual contains information protected by copyright. No part of this operator's manual may be photocopied or reproduced in any form without prior written consent from RAMTEQ.

© RAMTEQ, 2006
All rights reserved. Printed in USA.



Safety Guidelines



READ THIS FIRST! FAILURE TO READ AND OBSERVE ALL WARNING STATEMENTS COULD RESULT IN SEVERE BODILY INJURY OR DEATH, POSSIBLE INJURY TO OTHER PERSONS, DAMAGE TO MACHINE OR OTHER PROPERTY.

- DO NOT operate this machine in areas where open flames are not permitted. DO NOT store or use combustible materials on or near this machine. Use this equipment only in well ventilated areas. Failure to follow this warning may cause carbon monoxide build up, fire or explosion, and possible injury or death.
- DO NOT fill gasoline tank while engine is running. Allow engine to cool before refueling. Should gasoline be spilled, move the machine away from the area of the spill. Do not attempt to restart the machine until the gasoline has fully evaporated.
- DO NOT operate engine if air cleaner or cover directly over the carburetor air intake is removed.
- DO NOT touch hot mufflers, cylinders or fins, as contact may cause burns
- DO NOT operate this machine while under the influence of alcohol, drugs or while fatigued.
- DO NOT direct discharge stream at yourself or others. Risk of injection or injury may occur. Never put your hand or fingers over the spray tip. Do not try to stop or deflect leaks with your hand or body. Always face nozzle and wand to the ground when testing.
- DO NOT operate this machine WITHOUT wearing protective Eye Wear. Gloves, Hard Hat, Mask, Ear Plugs & Steel Toe Work Boots are also recommended, DO NOT wear loose clothing. Keep your body and clothing clear of the engine and discharge stream when the machine is running.
- DO NOT tie back or block trigger gun in OPEN position. Never leave the pressure washer unattended once you have started it. If you leave, shut down machine completely.
- DO NOT overreach or stand on an unstable support while operating this machine. Maintain good footing and balance.
- DO NOT permit this machine to run while unattended or for extended periods of time with trigger gun closed. Damage to pump may occur.
- DO NOT operate this machine in an unsafe manner or around unsupervised children. Keep all other personnel clear while operating this machine. This product should only be operated by trained personnel.
- DO NOT alter original factory settings prior to operating this machine. Risk of injury to yourself or other persons may occur.
- DO NOT remove hoses, guns, nozzles or any components while this machine is still hot or while it is running.
- DO NOT attempt to service this machine before reading the service manual.
- DO NOT use water with a temperature over 140 degrees Fahrenheit
- DO NOT put diesel fuel in to a gasoline tank or gasoline into a diesel tank. Observe correct markings on fuel tanks before filling.
- DO NOT operate this machine without knowing how to stop and bleed water pressures. Know all controls before using this machine.
- DO NOT spray caustic, acids or abrasive fluids through this machine.
- DO NOT permit water to freeze inside this machine. Pump and plumbing damage may occur.
- Use only recommended RAMTEQ™ parts when servicing this machine.
- RAMTEQ™ will not be held liable for any unauthorized modifications made to this machine. Any such action will void the warranty.
- When connecting battery, ensure that the RED battery cable is connected to the POSITIVE pole on the battery and the BLACK is connected to the NEGATIVE pole on the battery



Maintenance Instructions

MAINTENANCE PRECAUTIONS

- Do not permit acidic, caustic or abrasive fluids to be pumped through system.
- Periodically clean detergent inlet screen. This will ensure proper flow of water to the pump.
- High mineral content in water may adversely affect your machine and may require the use of a water softener to ensure proper operation.
- NEVER run the pump dry under any circumstances. Doing so will cause extreme damage to the pump.



FAILURE TO MAINTAIN HEAT EXCHANGER COIL MAY RESULT IN A STEAM EXPLOSION WHICH MAY CAUSE SERIOUS INJURY OR DEATH.

HEAT EXCHANGER COIL MAINTENANCE

- Hard water conditions may eventually cause clogging in the heat exchanger coil if left unattended. Scale deposits will compromise the heating efficiency and produce an unsafe condition over time. It may be necessary to descale coil.
- Scale buildup from certain detergents may eventually clog up the heat exchanger coil causing an unsafe condition. Use only recommended detergents for better cleaning efficiency.
- Black carbon deposits that collect on the outside wall of the heat exchanger coil may be a result of using a poor grade of fuel or improper burner operation. Heating fuel should be void of water and sediments to eliminate the possibility of sooting and compromising the efficiency of the coil.

MOVING, STORAGE

- Place machine in covered area when not in use to protect from elements. Protect machine from freezing in cold temperatures by storing in a heated location.

ENGINE MAINTENANCE

- Every time (before start): Check oil level.
- First 8 hours: Change oil with **SAE 30W High-Detergent Oil**.
- Every 25 hours: Change oil if operating under heavy load or high ambient temperature. Service air cleaner pre-cleaner.
- Every 50 hours: Change oil. Clean and inspect spark arrester if equipped.
- Every 100 hours: Service air cleaner cartridge, replace oil filter (if equipped), Clean oil cooler (if equipped), Clean cooling system.

WINTERIZING

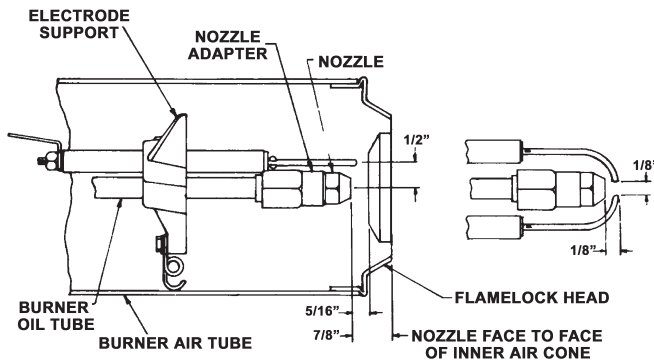
- Non-float Tank Machines: To protect the machine from freezing temperatures while storing or transporting, connect short length of garden hose (approximately 3 ft.) to water inlet connection on machine. Remove the pressure nozzle from the wand and insert the short garden hose end into a container of antifreeze. Place the wand into the antifreeze container and start engine running machine until antifreeze appears from the end of the wand. Turn engine "OFF" and replace pressure nozzle. Coil up hose and move machine to storage area.



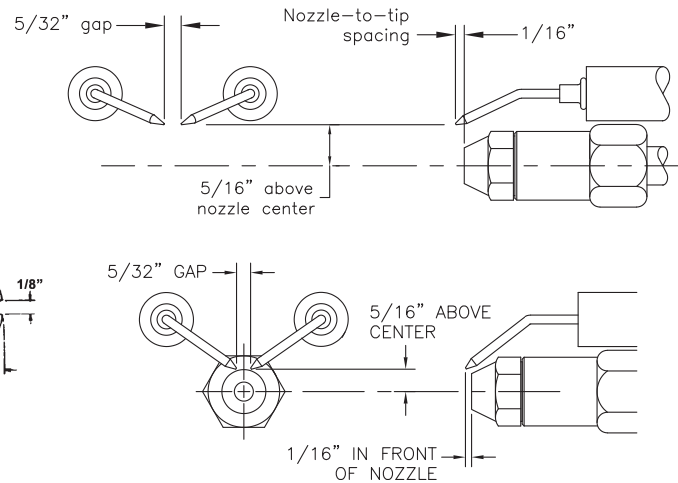
Maintenance Instructions

ELECTRODE SETTINGS

- Inspection of all wires, spring contacts and electrodes should be done periodically.



Wayne Burner



Beckett Burner

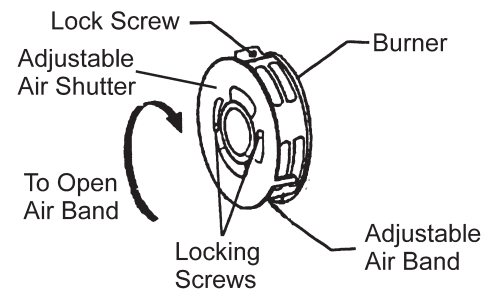


IF BLACK OR WHITE SMOKE VENTS FROM EXHAUST PORT UPON STARTING EQUIPMENT, DISCONTINUE USE AND ADJUST AIR BANDS BEFORE RESTARTING.

OIL BURNER AIR BAND ADJUSTMENT

RAMTEQ® sets oil burners at sea level. Air bands may need adjustment at higher elevations to offer enhanced performance of the burner and extended life of the machine.

- Adjustment of burner is done with pump motor and thermostat set to maximum. Loosen locking screw on air band, then close band until black smoke vents up exhaust vent. Take careful note of air band position when black smoke is first noticed. Slowly open air band until white smoke vents, then turn air band halfway back to where black smoke was first noted. Tighten air band locking screw. When properly set, the unit should NOT have either "black" smoke or "white" smoke during operation.



PUMP MAINTENANCE

- Fill crankcase to dot on oil gauge window per specifications with the specific oil created by the pump manufacturer (i.e. **General Pump Oil**). Ensure the right oil for specific pump as it may vary.
- Change oil after **25 Hour Break-in Period**.
- Change oil every **Three Months or at 100 Hour Intervals** thereafter.

UNLOADER ADJUSTMENT

- All RAMTEQ machines have the unloader correctly set at the the factory. Setting an unloader is a difficult job without the proper equipment and training. Should the need arise to change the unloader settings, please contact your local distributor.



Operating Instructions

LOCATION GUIDELINES

- Locate the machine on a solid and level surface so that engine and pump crankcase oil lubricate components properly. Avoid areas where water can build up in the working area. Possible injury can occur caused by the surface becoming slippery from water build up.
- Locate the machine in a well-ventilated area and away from flammable materials or fumes. Be sure ventilation warnings are observed. Keep pressure washer at least 18" away from flammable materials.
- Locate the machine so the operator has easy access to the jetter/pressure washer and its controls. Locate the machine so that it is protected from external damage.
- To prevent damage and excessive hose wear, locate the unit so that the hose does not cross traffic areas.

STARTING THE MACHINE

Following the steps below will insure successful operation:

- Read this manual completely before attempting to start the machine.
- Check the fuel tank and fill with a good grade of gasoline (87 octane minimum) for gas engines and a high quality diesel fuel for diesel engines.
- Check the engine oil level and fill with SAE 30 weight *high-detergent* oil.
- Check the pump oil level and fill with SAE 30w *non-detergent* oil if needed.
- Check water tank to ensure adequate level of water required for the job.
- Pull trigger on gun until a steady stream of water comes out the nozzle. This purges any air in the system.
- Slide fuel switch to the RIGHT and slide choke switch to the LEFT (closed position).
- Turn ON/OFF switch (on engine) to "ON".
- Open water flow to reduce back pressure in pump. Back pressure can overpower electric starter, preventing ignition.
- Turn key to start gas engine and allow RPM to develop.
- Let engine warm up for approximately 30 seconds and slide choke to "OPEN" position.
- Check for leaks in the system and cycle trigger gun to insure bypass is adjusted correctly. Repair any leaks and correct unloader adjustment if needed. Turn off machine before attempting any repairs.
- **WARNING** - Do not operate machine with less than 6" of water in the tank. Doing so may cause pump damage!

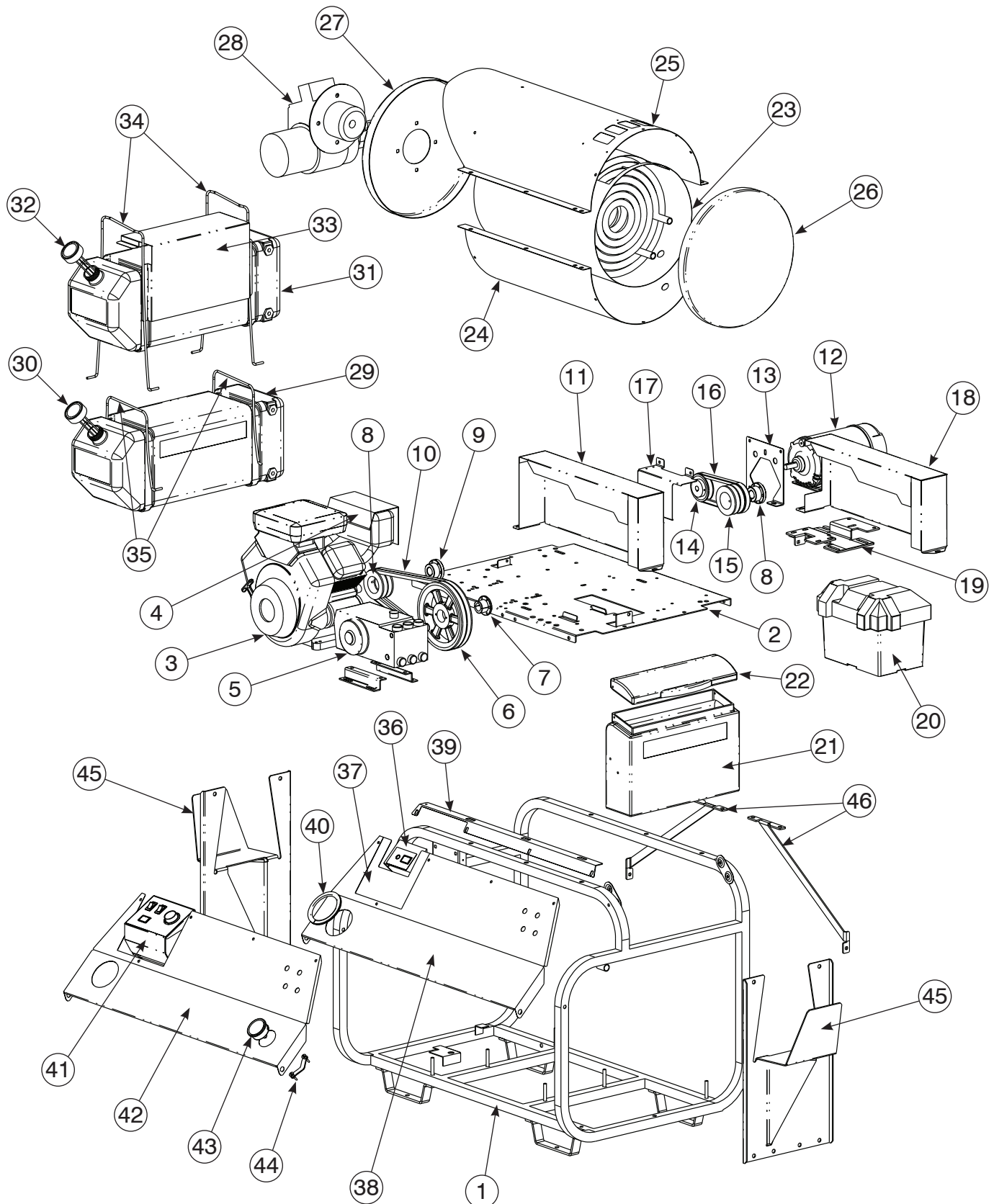
STOPPING THE MACHINE

- Turn engine to "OFF".
- Pull gun trigger to release water pressure from system.
- Disconnect wand & gun assembly.
- Wind up pressure hose on hose reel.

CAUTION

- Always wear protective safety gear, such as, but not limited to, rain coat or coveralls, rubber boots, face shield or goggles, gloves and hearing protection.
- Do not run the machine for more than two minutes with the jetter water flow shut off (by-pass mode). This will over heat the jetter pump and could cause injury to you.
- Do not run hot water thru this pump. Hot water will damage the pump, and will void the warranty.

Exploded View



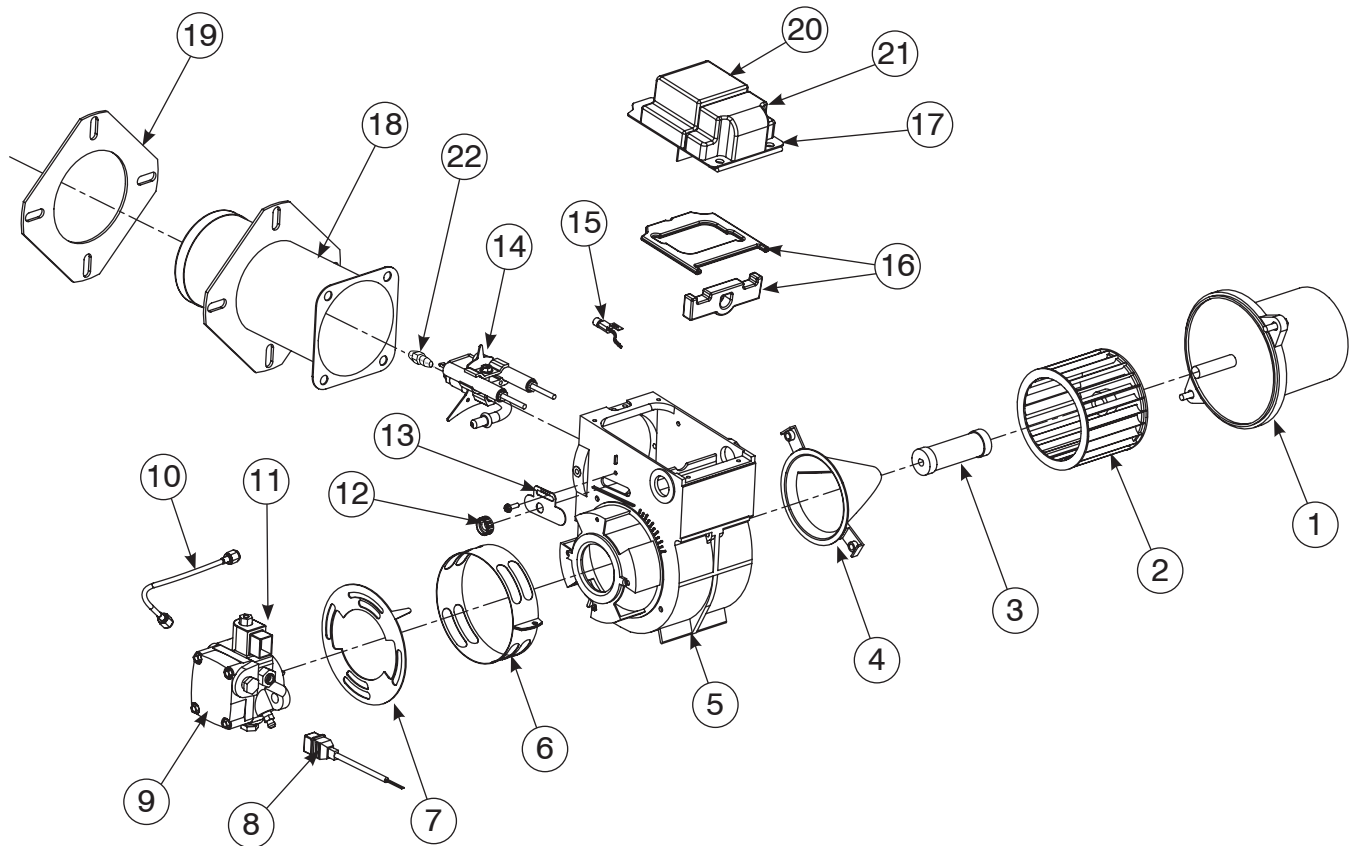


Parts List

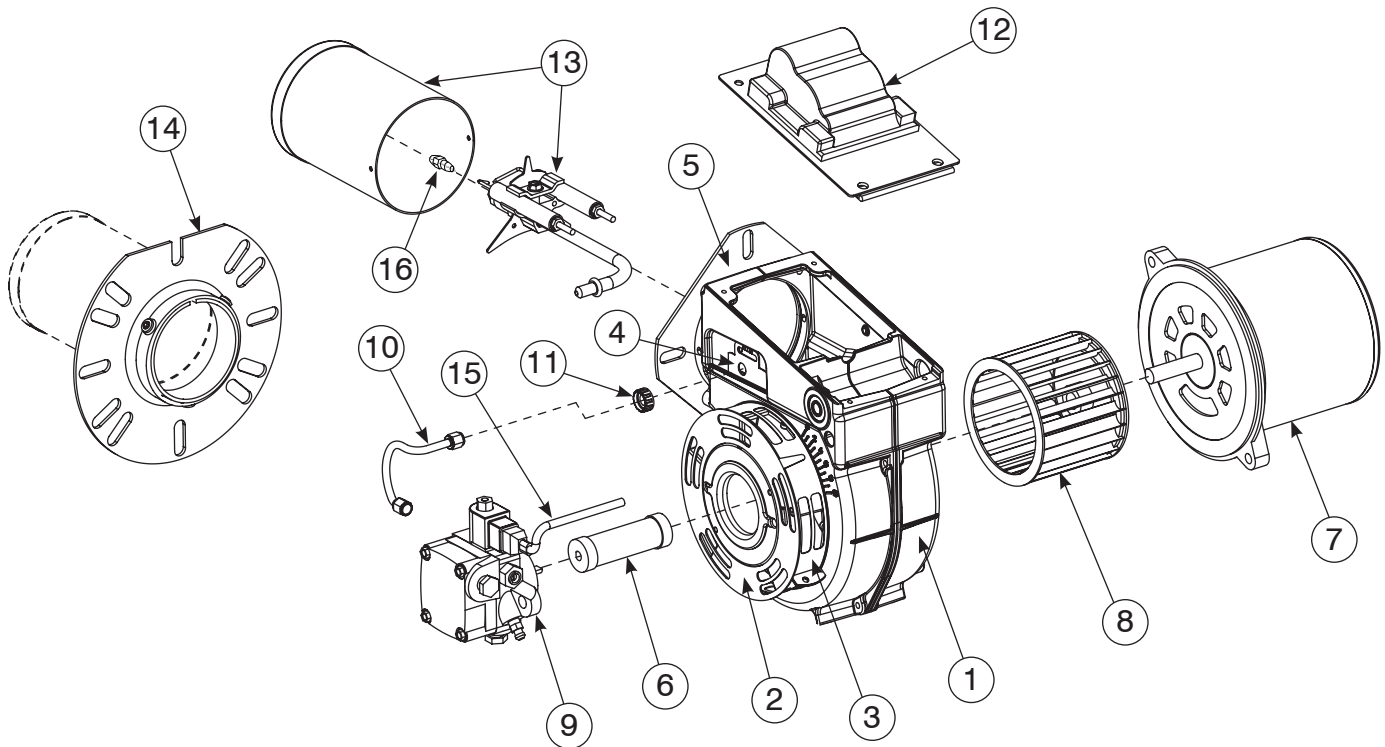
Ref.#	Part #	Description	Qty.
1	180-00319-01	Frame, EH	1
2	180-00320-01	Plate, Power, EH	1
3	See Pg 12	Engines (Honda, Vangaurd, Kohler, Yanmar)	1
4	See Pg 12	Muffler Assys (Honda, Vangaurd, Kohler)	1
5	See Pg 13	Pumps (General, Comet)	1
6	584-00002-52	Pulley, SST#2BK90H /2MBL87	1
7	516-00002-21	Bushing, SP, split taper, SST#H-24MM /L-24	1
8	584-00003-21	Pulley, SST#2B34SH /2B34	1
9	516-00003-21	Bushing, SP, split taper, SST#SH-1"	1
10	586-00004-11	Belt, BX43	2
11	180-00321-01	Belt guard, EH	1
12	216-00002-01	Generator, Winco, 2FSM2PC-1	1
13	180-00246-01	Adapter, belt guard, Winco	1
14	584-00002-19	Pulley, Maska #MB35 X 5/8, SST #BK 34 X 5/8	1
15	584-00003-31	Pulley, SST#3B34SH / 3B34	1
16	586-00004-01	Belt, BX22	1
17	180-00172-01	Generator Belt Guard, CH/DV	1
18	180-00321-02	Belt guard, w/generator cut out, EH	1
19	180-00269-01	Generator plate, EH	1
20	590-00001-01	Box, Battery, vented, black, w/hdwe	1
21	190-00003-01	Tank, float, base	1
22	190-00003-02	Tank, float, lid	1
23	155-00009-01	Coil, large, diesel fired, horiz, EH	1
24	180-00255-01	Shell, SS, bottom, EH	1
25	180-00256-01	Shell, SS, top, EH	1
26	180-00253-01	End cap, CH Lite, round	1
27	180-00254-02	Burner cap, EH, flat, w/holes	1
28	See Pg 9 & 10	Burners (Beckett - 12V & 115V)	1
29	190-00001-02	Tank,fuel,10 gal,red,Ramteq	1
30	140-00002-01	Cap, fuel guage, gas, red, one way vent w/	1
31	190-00001-01	Tank, fuel, 10 gal, green, Ramteq	1
32	140-00001-01	Cap, fuel guage, diesel, black, one way vent	1
33	180-00135-01	Heat Reflector, CH, 1 tank	1
34	180-00261-01	Torsion rod, dual fuel tank	2
35	180-00175-01	Strap, Tank Torsion, 304SS, 3 ga. .244"	2
36	055-00070-01	Control Box (EH)	1
37	180-00141-01	Closeout panel, EH	1
38	180-00312-02	Panel, front closeout, skids, w/o pres gauge	1
39	180-00313-01	Bracket, for front closeout panel, skids	1
40	563-00001-01	Trim,black plastic	12.5 IN
41	055-00028-02	Control Box (CH upgrade)	1
42	180-00312-01	Panel, front closeout, skids, w/pres gauge	1
43	575-00003-01	Pressure gauge, Panel Mount	1
44	576-00002-01	Mounting Bracket, for U-Clamp	1
45	180-00360-01	Cord Holder, for EH Special	1 or 2
46	180-00395-01	Bracket, for EH Frame	2



12V Burner Assembly



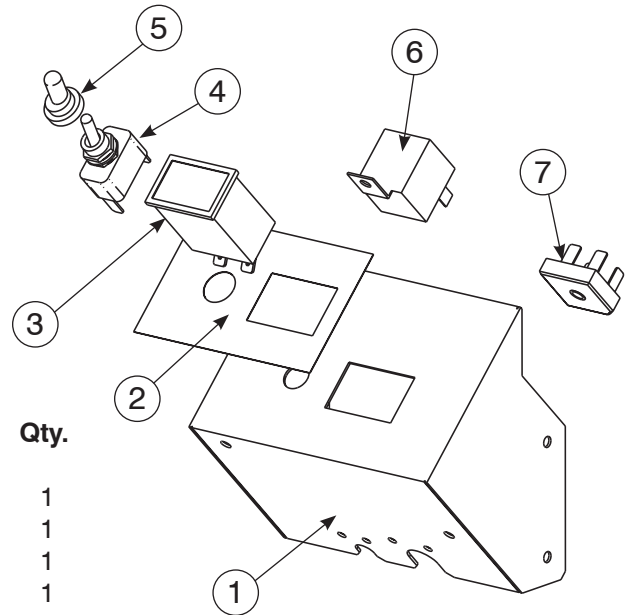
Ref.#	Beckett Part #	Ramteq Part #	Description
1	21699UF	254-00002-02	DC Motor
2	2140401	253-00004-01	Blower Wheel
3	21405	254-00001-11	Coupling
4	31231U	259-00006-01	Air Guide
5	5874BKU	259-00007-01	Burner Housing - Black
6	5151501	259-00005-01	Air Band
7	3494	259-00007-01	Air Shutter 8 Slot
8	21807	252-00014-01	Cord Set
9	218440ZU	251-00002-03	Pump (CleanCut)
10	21877U	252-0010-01	Tube assembly
11	21754U	252-00007-01	12 volt Coil
12	3666	252-00013-01	Escutcheon plate spline nut
13	3493	252-00012-01	Escutcheon plate
14	5700	258-00006-01	Electrode kit
15	7492	252-00009-01	Cad cell detector
16	51411	252-00011-01	Ignitor gasket kit
17	51776U	252-00005-02	Ignitor w/ICB
18	58020174	253-00008-01	Air Tube Combination
	58020198	253-00009-01	Air Tube Combination
19	31802	256-00002-01	Flange mounting gasket
20	7435U	252-00005-01	Ignitor only
21	51663	252-00006-01	Ignitor Control Board
22		245-00007-14	Burner Nozzle, 1.75, 90A

**115V Burner Assembly**

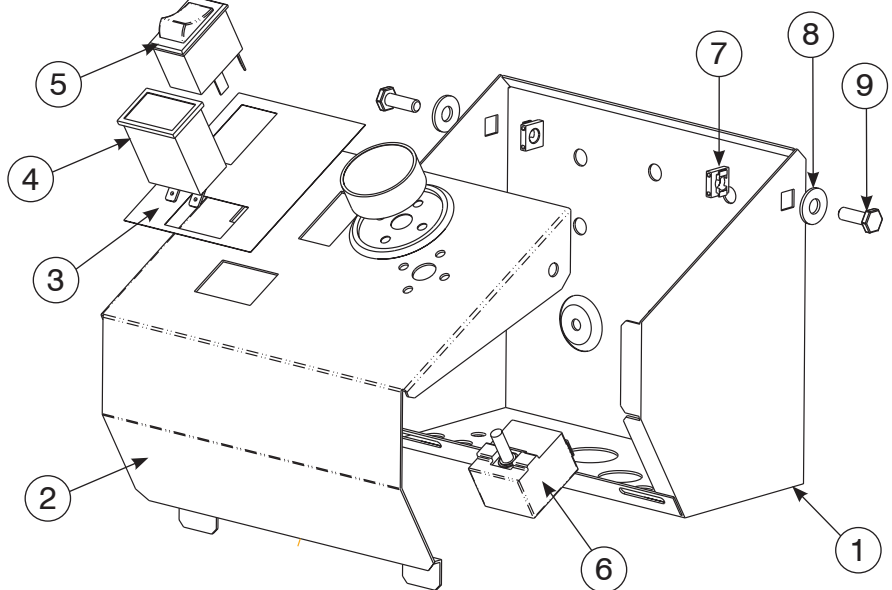
Ref.#	Beckett Part #	Ramteq Part #	Description
1	5348BK	259-00010-01	Housing
2	3215	259-00009-01	Shutter 10 Slot
3	3819A	259-00005-02	Air Band 10 Slot
4	3493	252-00012-01	Escutcheon Plate
5	323003	253-00005-01	Flange
6	2433	254-00001-12	Coupling
7	2900U	254-00002-01	1/5 HP Motor
8	2383	253-00004-02	6-1/4 X 3-7/16 Blower Wheel
9	21844	251-00002-05	Pump w/ Coil
10	5394	252-00010-02	Connector Tube Assembly
11	3666	252-00013-01	3/8 Spline Nut
12	7441	252-00005-05	Ignitor Assembly
13	SM35VMDC	253-00007-01	Air Tube Combination
14	5153508BK	253-00006-01	Air Tube Double Flange
15	21807	252-00014-01	Cordset Non Delay 16"
16	21566214	245-00007-16	Nozzle, 2.25, 90A
Not Shown	F22	260-00008-03	Air Cone, F22

**Control Box Assemblies****Base Control Box**

Ref.#	Part #	Description	Qty.
1	180-00027-01	Control Box	1
2	305-00038-01	Label, Control Box	1
3	571-00002-01	Meter, Hour	1
4	450-00004-01	Switch, Toggle, NKK#S301F	1
5	457-00001-01	Boot, switch, water prrof, NKK#AT402	1
6	455-00002-01	Relay,12V, VF441F11	1
7	455-00001-01	Rectifier, GBPC2506	1

**CH Upgrade Control Box**

Ref.#	Part #	Description	Qty.
1	180-00027-01	Control Box, Universal	1
2	180-00027-01	Control panel, small, 2 rocker, therm, hr	1
3	305-00040-02	Label, burner only control, XV	1
4	571-00002-01	Hourmeter	1
5	450-00001-01	Switch, rocker, low-amp	1
6	573-00001-01	Thermostat, 194 degree, 100438	1
7	508-00002-01	Nut, SP, Cage, 1/4-20,.064-.105	2
8	513-00008-01	Washer, SS, Plain, 1/4, narrow	2
9	505-00001-01	Bolt, SS, Hex, 1/4-20, .5"	2

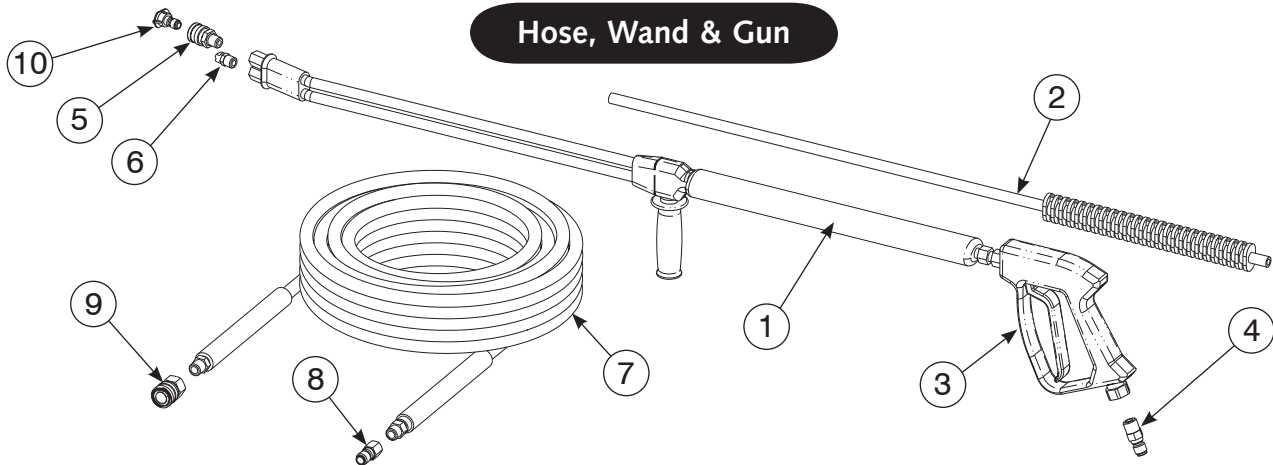




Engines & Mufflers

Part #	Description
206-00028-03	Engine, diesel, 10HP, Yanmar, L100V6CA1T1AA
206-00004-01	Engine, gas, 13HP, Honda, GX390U1QNR2
206-00006-04	Engine, gas, 16HP, B&S, w/muffler installed
206-00023-01	Engine, gas, 18HP, B&S, 350447-1075-E1
207-00002-01	Assy, muffler/shield, for B&S 16&20
206-00017-02	Engine, gas, 20HP 20A, Honda, GX620U1QAF1
207-00003-02	Assy, muffler/shield, Honda 16 & 20
206-00029-01	Engine, gas, 21HP, Briggs
207-00005-01	Assy, muffler/shield, for B&S 21/23 HP
206-00011-01	Engine, gas, 25HP, Kohler, CH25S, 1 1/8" shaft
207-00004-01	Assy, muffler kit, for Kohler 20/25 HP

Hose, Wand & Gun



Ref.#	Part #	Description	Qty.
1	265-00002-01	Dual lance,8107-1101,Comet 15*,43"SS	1
2	265-00001-01	Wand, 36", insulated	1
3	275-00001-01	Gun,BE, 85.202.108	1
4	552-00003-03	QC plug,sp,3/8",nptf	1
5	554-00006-02	QC coupler socket,brs,1/4",nptm	1
6	270-00038-01	Nozzle,water,SS,1/4, soap,#40,15 degr	1
7	284-00001-01	Hose Assembly, 50', 3000PSI @ 250°F (10-16 HP)	
	284-00002-01	Hose Assembly, 50', 5000PSI @ 250°F (18-25 HP)	
8	552-00004-03	QC plug,sp,3/8",nptf	1
9	554-00007-03	QC coupler socket,brs,3/8",nptf	1
10	270-00002-01	Nozzle, Water, #4.0, 0° Quick Connect (10,13 HP)	
	270-00002-02	Nozzle, Water, #4.0, 15° Quick Connect (10,13 HP)	
	270-00002-03	Nozzle, Water, #4.0, 25° Quick Connect (10,13 HP)	
	270-00002-04	Nozzle, Water, #4.0, 40° Quick Connect (10,13 HP)	
	270-00005-01	Nozzle, Water, #5.5, 0° Quick Connect (16-21 HP)	
	270-00005-02	Nozzle, Water, #5.5, 15° Quick Connect (16-21 HP)	
	270-00005-03	Nozzle, Water, #5.5, 25° Quick Connect (16-21 HP)	
	270-00005-04	Nozzle, Water, #5.5, 40° Quick Connect (16-21 HP)	
	270-00004-01	Nozzle, Water, #5.0, 0° Quick Connect (20-25 HP)	
	270-00004-02	Nozzle, Water, #5.0, 15° Quick Connect (20-25 HP)	
	270-00004-03	Nozzle, Water, #5.0, 25° Quick Connect (20-25 HP)	
	270-00004-04	Nozzle, Water, #5.0, 40° Quick Connect (20-25 HP)	



Belt Drive Pumps



General Pump TS2021-R Triplex Plunger Pump

Pump Repair Parts

Ref#	Part#	Description	Qty
1.	220-00009-01	Pump, Complete, General TS2021-R	1
2.	221-00001-03	Manifold, Brass Head TS2021	1

Pump Repair Kits (not shown)

221-00021-01	Check Valve Assembly Kit #1	(6 Each)	1
221-00020-01	Oil Seals, Kit #2	(3 Oil Seals)	1
221-00019-01	Valve Cap and O-Ring, Kit #16	(6 Each)	1
221-00023-01	V-Packing, Kit #69	(3 Each)	1
221-00031-01	Piston/Plunger, 20MM		3

General Pump TS1511 & T9211 Triplex Plunger Pump

Pump Repair Parts

Ref#	Part#	Description	Qty
1a.	220-00053-01	Pump, Complete, General TS1511	1
1b.	220-00103-01	Pump, Complete, General T9211	1
2a.	contact ramteq	Manifold, Brass Head TS1511	1
2b.	contact ramteq	Manifold, Brass Head T9211	1

Pump Repair Kits (not shown)

221-00002-01	Check Valve Assembly Kit #1	(6 Each)	1
221-00018-01	Oil Seals, Kit #2	(3 Oil Seals)	1
221-00072-01	O-Ring for Valve Cap Kit	(6 Each)	1
221-00081-01	Brass Valve Cap Kit	(6 Each)	1
221-00029-01	V-Packing, Kit #69	(3 Each)	1
221-00031-01	Piston/Plunger, 20MM		3

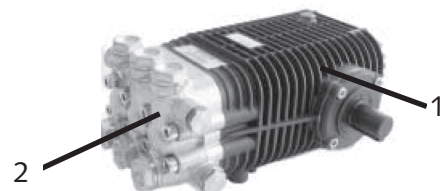
General Pump T9821 Triplex Plunger Pump

Pump Repair Parts

Ref#	Part#	Description	Qty
1.	220-00008-01	Pump, Complete, General T9821	1
2.	contact ramteq	Manifold, Brass Head T9821	1

Pump Repair Kits (not shown)

221-00002-01	Check Valve Assembly Kit #1	(6 Each)	1
221-00018-01	Oil Seals, Kit #2	(3 Oil Seals)	1
221-00025-01	Valve Cap and O-Ring, Kit #6	(6 Each)	1
221-00029-01	V-Packing, Kit #69	(3 Each)	1
221-00044-01	Piston/Plunger, 20MM		3



Comet SW5540 Triplex Plunger Pump

Pump Repair Parts

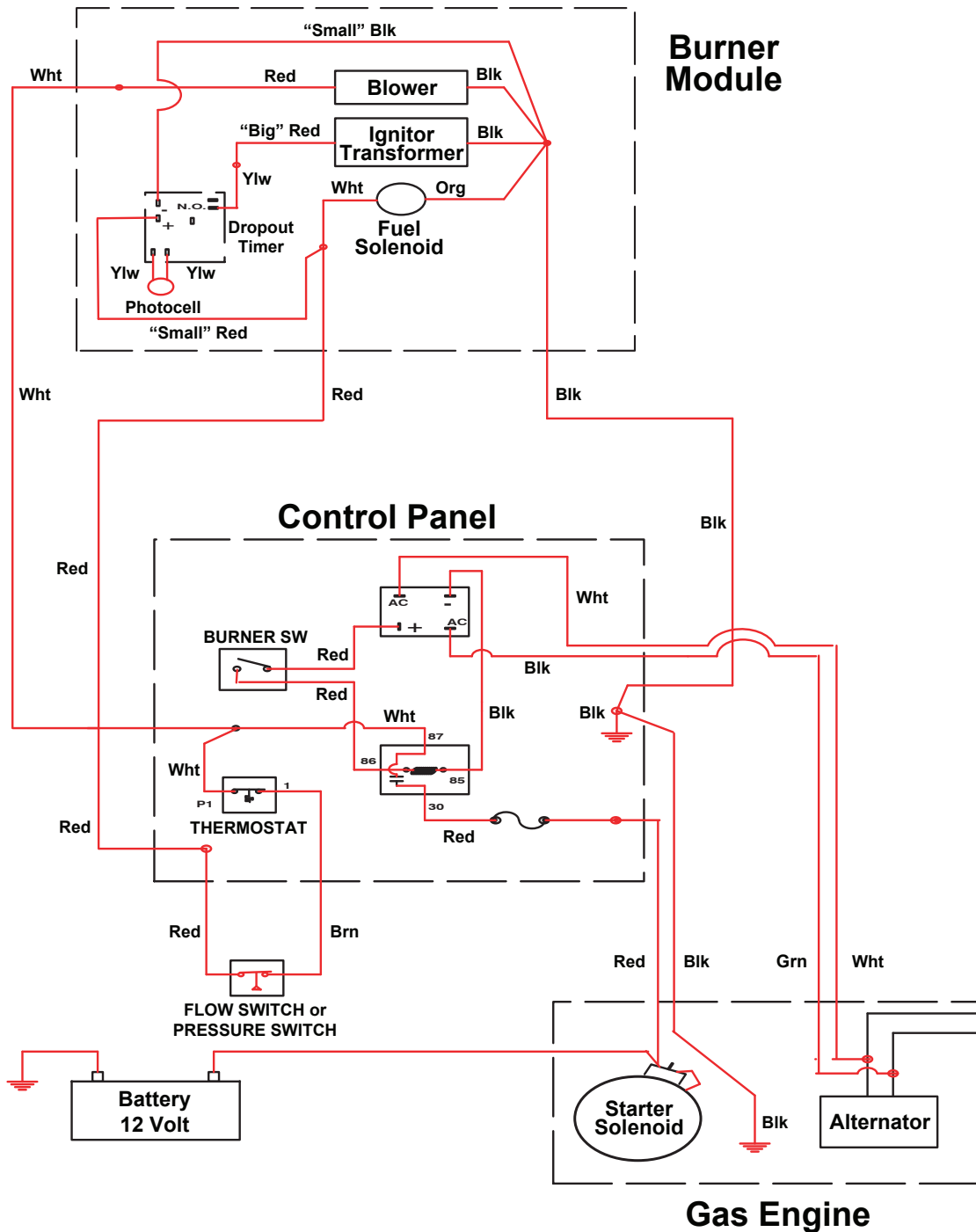
Ref#	Part#	Description	Qty
1.	220-00099-01	Pump, Complete, Comet SW5540	1
2.	contact ramteq	Manifold, Brass Head SW5540	1

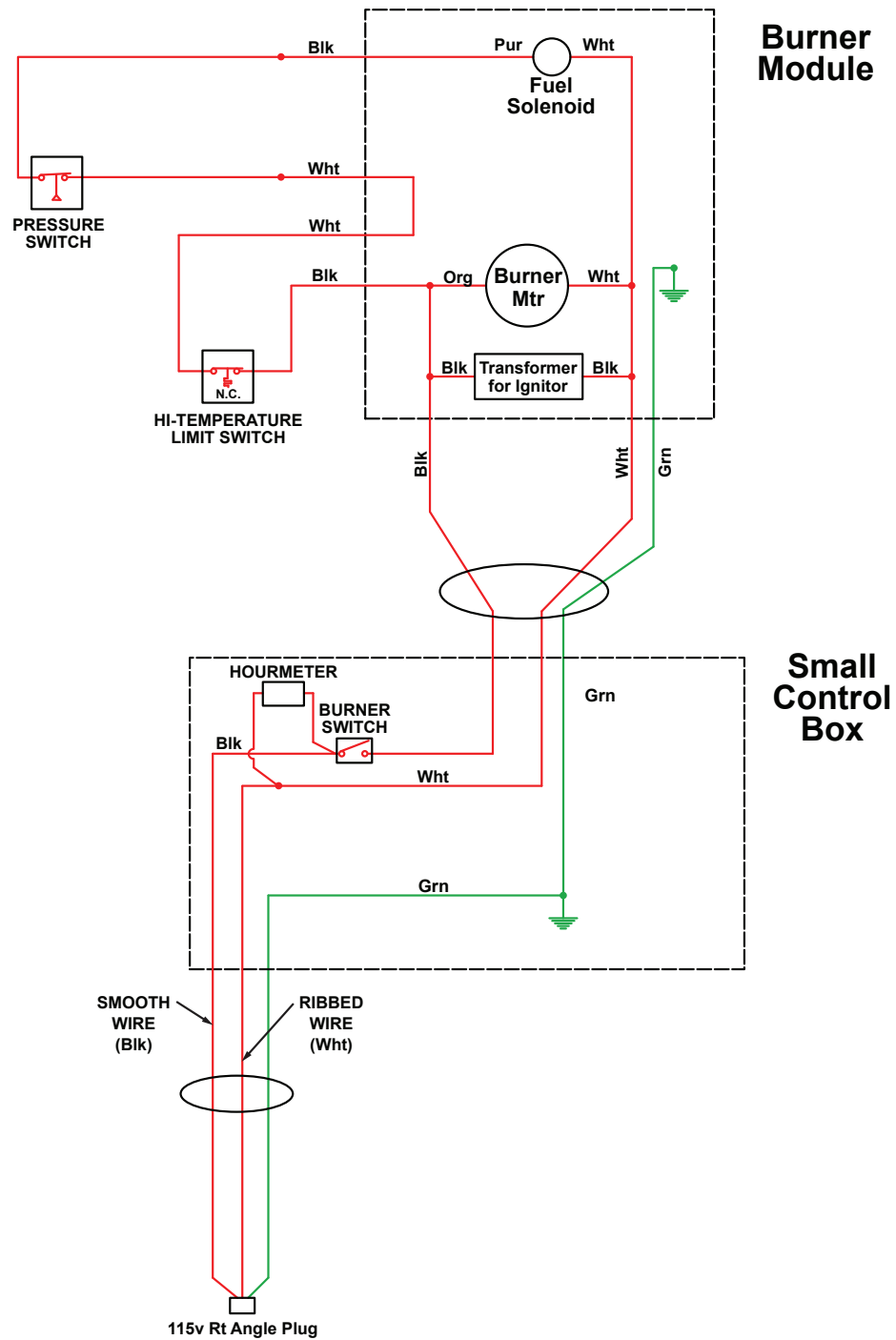
Pump Repair Kits (not shown)

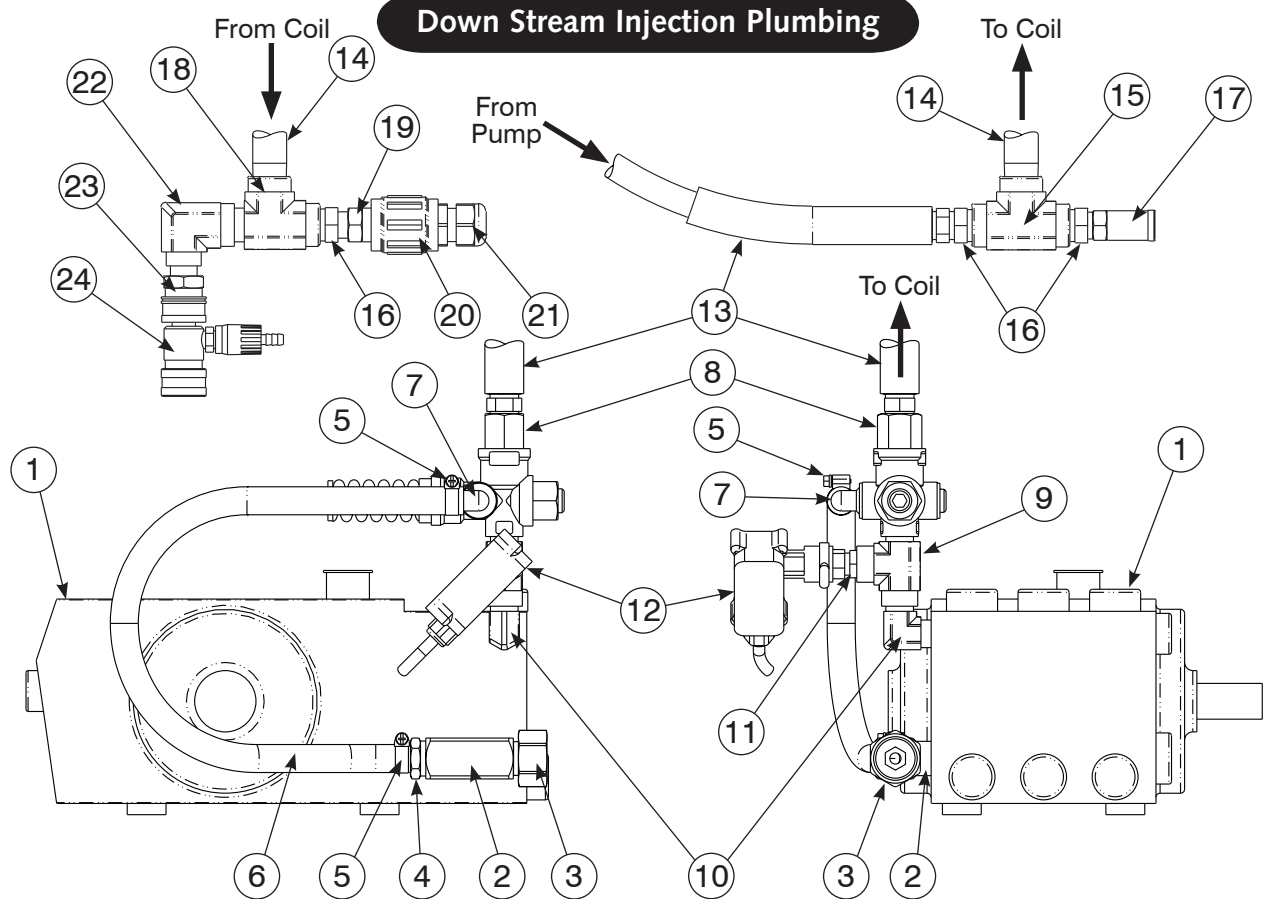
221-00021-01	Check Valve Kit	(6 Each)	1
221-00020-01	Complete Oil Seals, O-Ring Kit		1
221-00023-01	Packing Kit	(3 Each)	1

Wiring Diagram

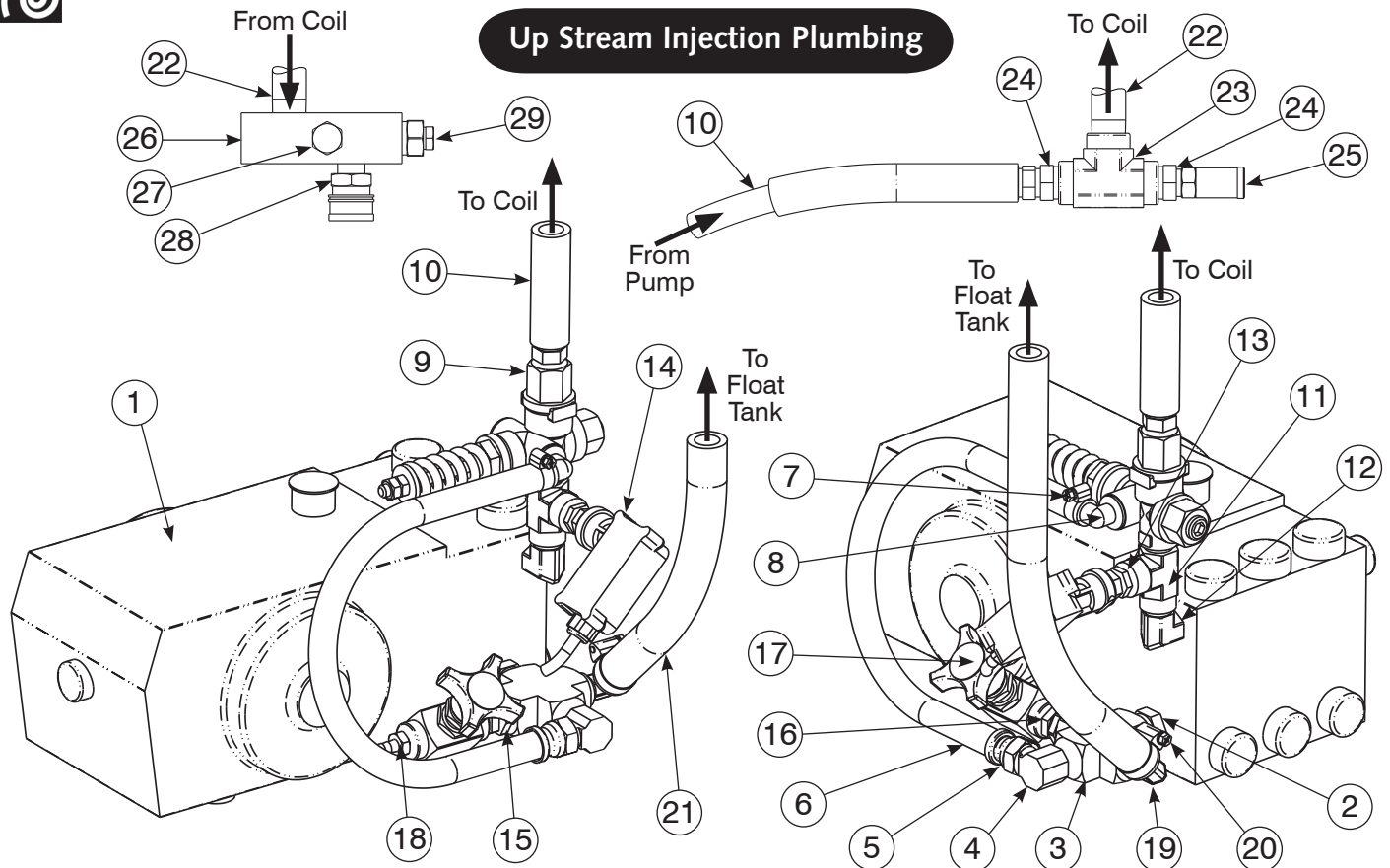
ELECTRICAL SCHEMATIC



**Wiring Diagram****ELECTRICAL SCHEMATIC
EH W/ GENERATOR**



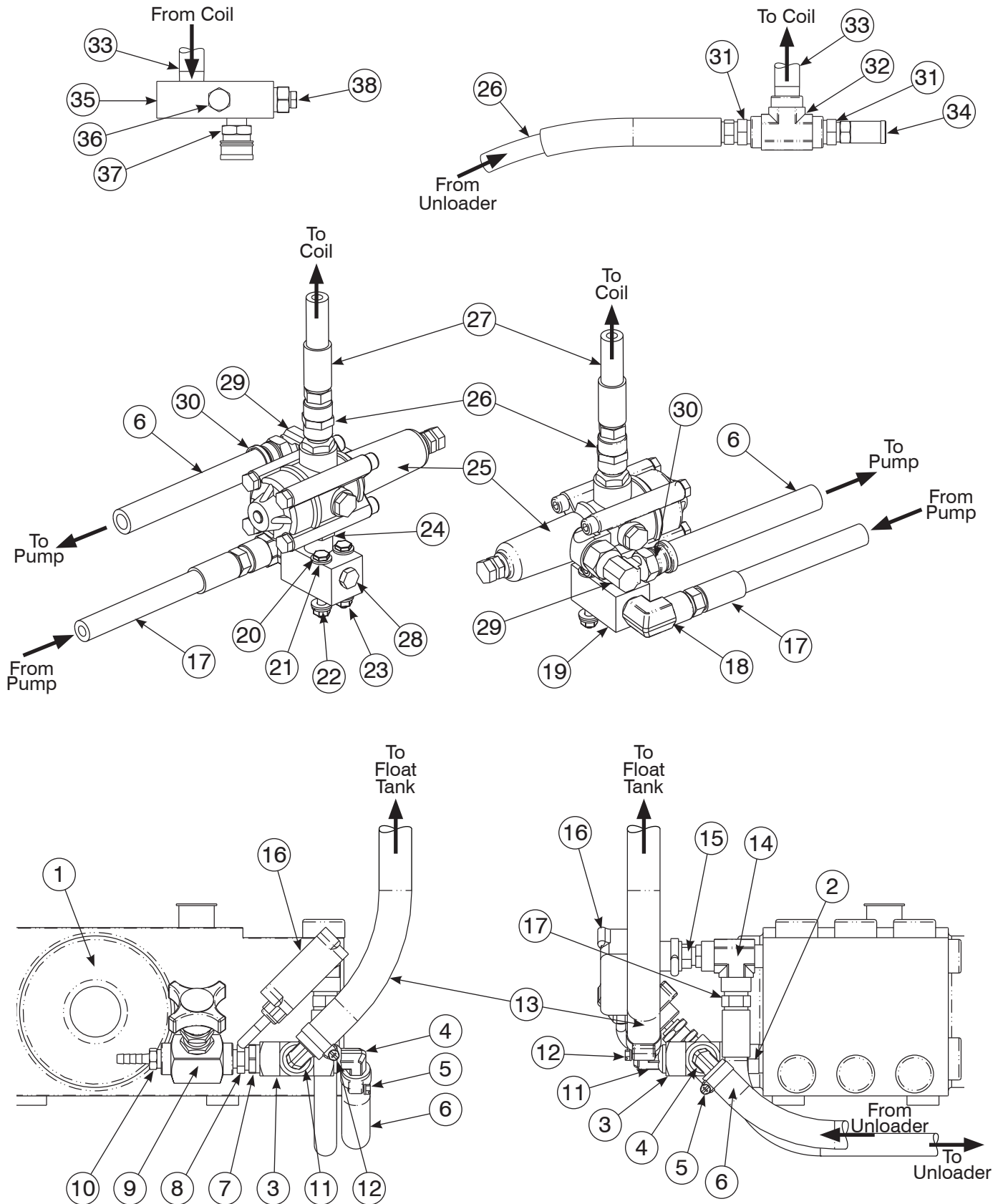
Ref.#	Part #	Description	Qty.
1	See Page 13	Pumps (General, Comet)	1
2	538-00007-01	Tee, branch, brs, 1/2npt	1
3	522-00010-01	Conn, Gar. Hose, 3/4 swivel X 1/2 nptm, close	1
4	522-00002-03	Conn, hose end, brs, 1/2nptm X 3/8 barb	1
5	557-00001-01	Hose Clamp, ss, 0.25"-0.63" diameter	2
6	280-00002-03	Hose, low pressure, 1/2"	17 in
7	530-00003-04	Elbow, brs, 3/8nptm X 3/8 barb, 90 degrees	1
8	230-00011-02	Unloader, Pulsar#3HP, without knob	1
9	536-00003-02	Tee, Street, sp, 3/8nptf X 3/8nptm X 3/8nptf	1
10	528-00002-01	Elbow, sp, 3/8nptf X 3/8nptm, 90 degrees	1
11	517-00002-01	Bushing, SP, 3/8 nptm X 14/nptf	1
12	574-00002-01	Pressure switch, GP#YPRESSWITCH	1
13	284-00010-06	Hose Assy, 48"L, 3/8", 4000PSI@250F, High	1
14	524-00013-02	Nipple, sch. 80, 1/2" X 3", galvanized	2
15	536-00006-05	Tee, sp, 1/2"	1
16	517-00003-02	Bushing, sp, 1/2 nptm X 3/8 nptf	3
17	569-00003-10	Valve, pop-off, 5000 psi, #22533A	1
18	536-00003-03	Tee, street, sp, 1/2 nptf X 1/2 nptm X 1/2 nptf	1
19	450-00014-01	Switch, thermal hi-limit, 210 deg., 3/8 X 1/2	1
20	543-00004-04	Coupling, PVC, 1/2 FPT X 1/2 FPT	1
21	567-00010-01	Bushing, str wire, 230-.546, 1/2, Heyco #3200	1
22	528-00003-01	Elbow, sp, 1/2 nptf X 3/8 nptf, 90 degrees	1
23	554-00006-03	QC coupler socket, brs, 3/8" nptm	1
24	579-00004-03	Injector, detergent, GP 100577 5-8 gpm	1
Not Shown	285-00002-01	Tubing, clear, 1/4" ID, 3/8"OD	48 in
Not Shown	570-00002-01	Check valve, plastic, .25", w/screen	1



Ref.#	Part #	Description	Qty.
1	See Page 13	Pumps (General, Comet)	1
2	524-00009-01	Nipple, sp, 1/2 nptm hex, close	1
3	550-00004-01	Cross, brs, 1/2" FPT	1
4	530-00004-01	Elbow, brs, JIC male X 1/2 nptm, 90 degrees	1
5	281-00002-02	Swivel, brs, JIC female X 3/8 barb	1
6	280-00002-02	Hose, low pressure, 3/8"	17 in
7	557-00001-01	Hose Clamp, ss, 0.25"-0.63" diameter	1
8	530-00003-04	Elbow, brs, 3/8 nptm X 3/8 barb, 90 degrees	1
9	230-00011-02	Unloader, Pulsar #3HP, without knob	1
10	284-00010-06	Hose assy, 48"L, 3/8", 4000 psi @ 250 F	1
11	536-00003-02	Tee, street, sp, 3/8 nptf X 3/8 nptm X 3/8 nptf	1
12	528-00002-01	Elbow, sp, 3/8 nptf X 3/8 nptm, 90 degrees	1
13	517-00002-01	Bushing, sp, 3/8 nptm X 1/4 nptf	1
14	574-00002-01	Pressure switch, GP#YPRESSWITCH	1
15	582-00003-03	Bushing, brs, 1/2 X 3/8	1
16	524-00003-01	Nipple, hex, sp, 3/8 nptm X 1/4 nptm	1
17	579-00006-01	Valve, metering	1
18	522-00001-01	Conn, hose end, 1/4 nptm X 1/4 barb	1
19	530-00004-09	Elbow, brs, 1/2 nptm X 5/8 barb, 90 degrees	1
20	557-00001-03	Hose Clamp, ss, #12	1
21	280-00002-04	Hose, low pressure, 5/8" ID	42 in
22	524-00013-02	Nipple, sch. 80, 1/2" X 3", galvanized	2
23	536-00006-05	Tee, sp, 1/2"	1
24	517-00003-02	Bushing, sp, 1/2 nptm X 3/8 nptf	2
25	569-00003-10	Valve, pop-off, 5000 psi, #22533A	1
26	185-00001-01	Manifold, outlet	1
27	518-00004-01	Plug, brs, 3/8	1
28	554-00006-03	QC coupler socket, brs, 3/8" nptm	1
29	573-00001-01	Thermostat, 194 degrees, 100438	1
Not Shown	285-00002-01	Tubing, clear, 1/4" ID, 3/8"OD	48 in
Not Shown	570-00002-01	Check valve, plastic, .25", w/screen	1



Flow Sensitive Unloader Plumbing





Flow Sensitive Unloader Parts List

Ref.#	Part #	Description	Qty.
1	See Page 13	Pumps (General, Comet)	1
2	524-00009-01	Nipple, sp, 1/2 nptm hex, close	1
3	550-00004-01	Cross, brs, 1/2" FPT	1
4	530-00004-04	Elbow, brs, 1/2 nptm X 1/2 barb, 90 degrees	1
5	557-00001-02	Hose Clamp, ss, 0.40"-0.90" dia.	1
6	280-00002-03	Hose, low pressure, 1/2"	32 in
7	582-00003-03	Bushing, brs, 1/2 X 3/8	1
8	524-00003-01	Nipple, hex, sp, 3/8 nptm X 1/4 nptm	1
9	579-00006-01	Valve, metering	1
10	522-00001-01	Conn, hose end, 1/4 nptm X 1/4 barb	1
11	530-00004-09	Elbow, brs, 1/2 nptm X 5/8 barb, 90 degrees	1
12	557-00001-03	Hose Clamp, ss, #12	2
13	280-00002-04	Hose, low pressure, 5/8" ID	43 in
14	536-00003-02	Tee, street, sp, 3/8 nptf X 3/8 nptm X 3/8 nptf	1
15	517-00002-01	Bushing, sp, 3/8 nptm X 1/4 nptf	1
16	574-00002-01	Pressure switch, GP#YPRESSWITCH	1
17	284-00010-05	Hose assy, 36"L, 3/8", 4000 psi @ 250F, high	1
18	528-00002-02	Elbow, street, sp, 3/8 nptm X 3/8 nptf, 90 degrees	1
19	185-00002-01	Manifold, unloader	1
20	504-00001-07	Bolt, sp, hex, 1/4-20 X 2"L	2
21	513-00008-01	Washer, sp, flat, 1/4 SAE	4
22	512-00003-01	Washer, sp, Hel Sprg Lk, 5/16, SAE	2
23	508-00001-01	Nut, SP, Hex, 1/4-20	2
24	524-00003-02	Nipple, sp, 3/8 nptm X 1/2 nptm	1
25	230-00015-03	Unloader, K7.2, 3.2-6.6 GPM	1
26	540-00003-01	Coupler, sp, 3/8 nptf X 3/8 nptf	1
27	284-00010-09	Hose assy, 23"L, 3/8", 4000 psi @ 250F, high	1
28	518-00001-01	Plug, brs, 1/4 nptm, hex	1
29	530-00003-02	Elbow, brs, 3/8 nptm X #8 JIC male, 90 degrees	1
30	281-00002-02	Swivel, brs, #8jic fem x 3/8 barb	1
31	517-00003-02	Bushing, sp, 1/2 nptm X 3/8 nptf	2
32	536-00006-05	Tee, sp, 1/2"	1
33	524-00013-02	Nipple, sch. 80, 1/2" X 3", galvanized	2
34	569-00003-10	Valve, pop-off, 5000 psi, #22533A	1
35	185-00001-01	Manifold, outlet	1
36	518-00004-01	Plug, brs, 3/8	1
37	554-00006-03	QC coupler socket, brs, 3/8" nptm	1
38	573-00001-01	Thermostat, 194 degrees, 100438	1
Not Shown	285-00002-01	Tubing, clear, 1/4" ID, 3/8"OD	48 in
Not Shown	570-00002-01	Check valve, plastic, .25", w/screen	1



Troubleshooting

problem	cause	action
Low Water Pressure	Insufficient water source Old or incorrect nozzle Plumbing or hose leak Obstruction in spray nozzle Chemical valve open Unloader valve worn Pump valves dirty or worn	Check hose size/water source Replace nozzle Tighten, repair or replace leak Clean or replace nozzle Close valve or submerge hose Replace unloader Clean or replace packing/valves
No Chemical Flow	Detergent valve closed Low detergent level Chemical screen dirty	Open detergent valve Fill detergent container Clean detergent screen
Burner Not Igniting	No fuel Burner switch turned off Thermostat set too low Clogged fuel filter Defective pressure switch Clogged burner nozzle Fuel pump malfunction Improper electrode setting	Fill fuel tank with proper fuel Turn burner switch on Reset thermostat Replace fuel filter Replace pressure switch Replace burner nozzle Replace fuel pump Clean/reset to specifications
Excessive Burner Smoke	Improper fuel being used Water contamination in fuel Improper air band adjustment Low fuel pressure Air leaks in fuel lines Soot on coils/burner assembly Misaligned electrodes Dirty burner nozzle	Use Diesel #1/#2 or Kerosene Drain fuel and replace with new Readjust air band/altitude Adjust to specifications Check for air leaks or bubbles Clean coils/burner assembly Realign to specifications Clean or replace burner nozzle
Pressure Relief Valve Leaks	Nozzle is dirty Defective relief valve Unloader adjusted incorrectly Restriction on discharge hose Scale restricting flow in coil	Clean or replace nozzle Replace relief valve Adjust unloader valve Remove nozzle and flush line Clean coil
Engine Will Not Start	Throttle lever off No fuel in engine Bad fuel or wrong fuel in engine Worn, foul, or dirty spark plug(s) Pressure build up in pump	Turn throttle lever to "on" position Fill fuel tank if needed Check to ensure correct fuel in tank Check spark plugs Squeeze trigger on gun
Engine runs rough/no power	Low oil level Dirty air filter Bad fuel or wrong fuel in engine Worn, foul, or dirty spark plug(s) Overchoking Engine has lost compression Intake valve stuck open or stuck closed Incorrect fuel/air mixture	Check oil level, fill if needed Check and replace air filter if needed Check to ensure correct fuel in tank Check spark plugs Open choke fully and crank engine Service engine at repair center Service engine at repair center Service engine at repair center
Pump Noisy	Air in suction line Pump valves dirty Check valve springs worn Low pump oil Pump bearings are worn Incoming water too hot	Check inlet water fittings Clean/replace pump valves Replace check valves Add SEA 30wt. non-detergent Replace/rebuild pump Reduce temperature/ambient
Water In Oil	High humidity environment Oil seal worn Plunger packing worn	Change oil frequently Check and replace oil seal Check and replace packing
Water Dripping/Pump	Plunger packing is worn Plunger retainer oil ring worn Cracked ceramics	Install new packing kit Replace oil ring Replace ceramics
Oil Dripping	Oil seal worn Cracked manifold	Check and replace oil seals Replace manifold
Fluctuating Pressure	Unloader not adjusted Valves worn Dirt or blockage in valves Pump sucking air Worn plunger packing	Adjust to specifications Replace with valve kit Clean or replace valve Check water/detergent supply Replace packing kit
Pump Head Overheating	Extended period in bypass	Pull trigger gun for water flow

Limited One Year **WARRANTY**

Ramteq Incorporated ("RAMTEQ") warrants that the Product you have purchased from RAMTEQ or from an Authorized RAMTEQ Reseller is free from defects in materials or workmanship under normal use for a period of one (1) year from the date of purchase. This warranty extends only to you, the original Purchaser. It is not transferable to anyone who subsequently purchases the Products from you. This warranty specifically excludes expendable items, including but not limited to hoses, seals, nozzles and gunjets. RAMTEQ manufacturers warrant certain components of the Products for periods greater than one (1) year. MOTORS, GENERATORS, PUMPS, COILS, BURNERS AND ENGINES ARE WARRANTED BY THEIR RESPECTIVE MANUFACTURERS, AND SERVICED THROUGH THESE MANUFACTURERS' LOCAL AUTHORIZED SERVICE CENTERS. Specific warranty details can be found on the individual manufacturers website. RAMTEQ CANNOT PROVIDE WARRANTY ON THESE ITEMS.

During the warranty period, RAMTEQ will repair or replace defective parts, at the option of RAMTEQ.

This limited warranty does not extend to any Product not purchased from RAMTEQ or from an Authorized RAMTEQ Reseller. This limited warranty also does not extend to any Product that has been damaged or rendered defective (a) as a result of accident, misuse or abuse; (b) by operation outside the specifications in the intended applications; (c) by the use of parts not sold or manufactured by RAMTEQ; (d) by the modification of the Product.

Warranty Disclaimer

EXCEPT AS EXPRESSLY SET FORTH IN THIS WARRANTY, RAMTEQ MAKES NO OTHER WARRANTIES, EXPRESS OR IMPLIED, INCLUDING ANY IMPLIED WARRANTIES OF MERCHANTABILITY AND FITNESS FOR A PARTICULAR PURPOSE. RAMTEQ EXPRESSLY DISCLAIMS ALL AND ANY WARRANTIES NOT STATED IN THIS LIMITED WARRANTY. ANY IMPLIED WARRANTIES THAT MAY HAVE BEEN IMPOSED BY LAW ARE LIMITED TO THE TERMS OF THIS EXPRESS LIMITED WARRANTY.

Limitation of Remedy

RAMTEQ IS NOT LIABLE FOR ANY DAMAGES CAUSED BY THE PRODUCT OR FAILURE OF THE PRODUCT TO PERFORM, INCLUDING INCIDENTAL AND CONSEQUENTIAL DAMAGES. THIS LIMITATION APPLIES WHETHER DAMAGES ARE SOUGHT, OR A CLAIM MADE, AS A CONTRACT CLAIM, AS A TORT CLAIM, OR ANY OTHER CLAIM.

THIS LIMITATION OF LIABILITY, HOWEVER, WILL NOT APPLY FOR PERSONAL INJURY.

U.S.A. State Laws

Some states do not allow limitation on how long an implied warranty lasts. In such states, the limitations or exclusions of this Limited Warranty may not apply to you.

Some states do not allow the exclusion or limitation in incidental or consequential damages for consumer products. In such states, the exclusion may not apply to you. This limited warranty gives you specific legal rights. You may also have other rights that may vary from state to state. You are advised to consult applicable state laws for a full determination of your rights.

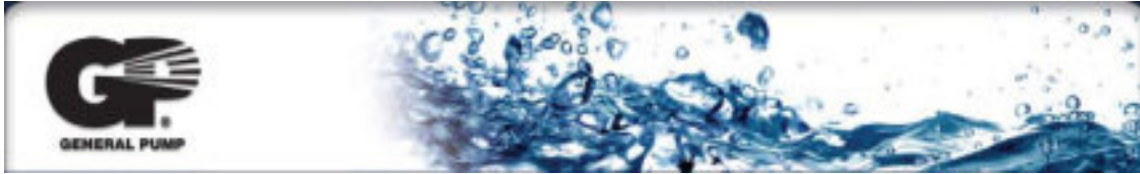
How to Obtain Warranty Service

TO OBTAIN WARRANTY SERVICE YOU MUST CONTACT RAMTEQ or an AUTHORIZED RAMTEQ RESELLER.



Manufacturers Warranty Period

Click on pictures to open manufacturers website.



5 years



5 years



3 years



3 years



3 years



18 months

M&M Manufacturing Co. Inc.

3 years



18/36 months



1 year